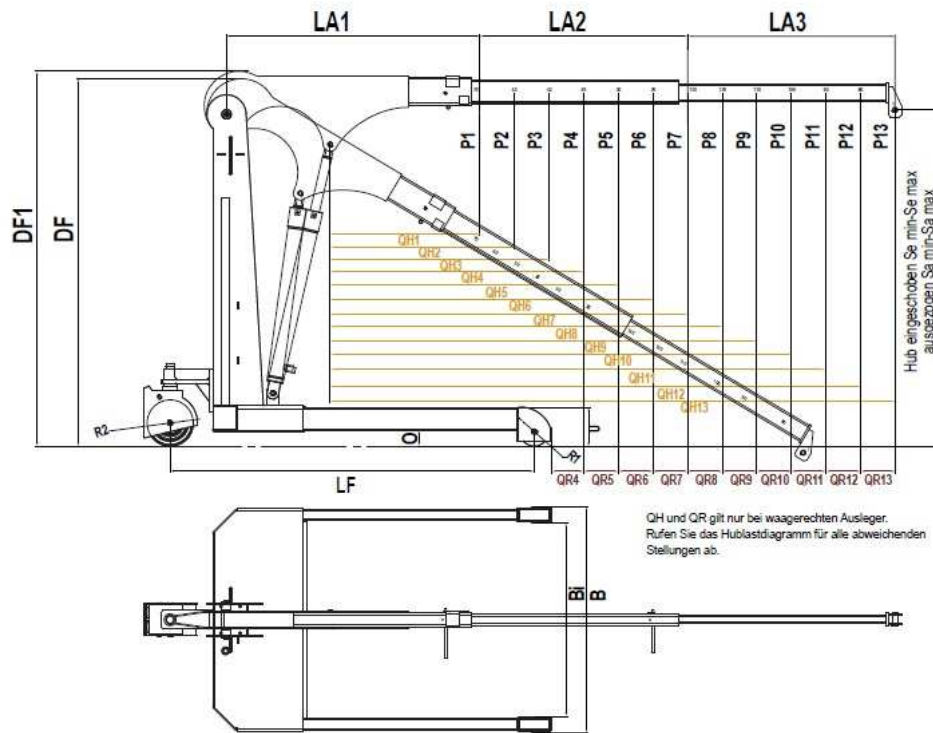


# INDUSTRIEKRANE Parallel Technische Daten



HB1000  
FaPo

HB2000  
FaPo

HB3000  
FaPo

HB1000B07  
FaPo

HB2000B08  
FaPo

## Technische Hauptdaten

| Stellung     | P Tragkraft<br>QH Ausladung vor der Hydraulik<br>QR Ausladung vor den Rädern | mm  | HB1000         |       |       | HB2000       |       |       | HB3000      |       |       | HB1000B07         |       |       | HB2000B08         |       |       |
|--------------|--|-----|----------------|-------|-------|--------------|-------|-------|-------------|-------|-------|-------------------|-------|-------|-------------------|-------|-------|
|              |  |     | P kg           | QH mm | QR mm | P kg         | QH mm | QR mm | P kg        | QH mm | QR mm | P kg              | QH mm | QR mm | P kg              | QH mm | QR mm |
| 1            | P1   QH1   QR1   |     | 1000           | 650   | 0     | 2000         | 1100  | 0     | 3000        | 1100  | 0     | 1000              | 650   | 0     | 2000              | 1100  | 0     |
| 2            | P2   QH2   QR2   |     | 820            | 800   | 0     | 1600         | 1275  | 0     | 2700        | 1275  | 0     | 880               | 800   | 0     | 1800              | 1275  | 0     |
| 3            | P3   QH3   QR3   |     | 660            | 950   | 0     | 1200         | 1450  | 0     | 1900        | 1450  | 0     | 780               | 950   | 0     | 1650              | 1450  | 0     |
| 4            | P4   QH4   QR4   |     | 460            | 1100  | 138   | 800          | 1625  | 155   | 1350        | 1625  | 70    | 700               | 1100  | 138   | 1500              | 1625  | 155   |
| 5            | P5   QH5   QR5   |     | 355            | 1250  | 288   | 600          | 1800  | 330   | 1000        | 1800  | 245   | 650               | 1250  | 288   | 1400              | 1800  | 330   |
| 6            | P6   QH6   QR6   |     | 280            | 1400  | 438   | 450          | 1975  | 505   | 830         | 1975  | 420   | 600               | 1400  | 438   | 1300              | 1975  | 505   |
| 7            | P7   QH7   QR7   |     | 240            | 1550  | 588   | 400          | 2150  | 680   | 700         | 2150  | 595   | 550               | 1550  | 588   | 1200              | 2150  | 680   |
| 8            | P8   QH8   QR8   |     | 180            | 1700  | 738   | 300          | 2325  | 855   | 500         | 2325  | 760   | 255               | 1700  | 738   | 570               | 2325  | 855   |
| 9            | P9   QH9   QR9   |     | 150            | 1850  | 888   | 250          | 2500  | 1030  | 400         | 2500  | 935   | 235               | 1850  | 888   | 540               | 2500  | 1030  |
| 10           | P10   QH10   QR10  |     | 130            | 2000  | 1038  | 220          | 2675  | 1205  | 330         | 2675  | 1110  | 220               | 2000  | 1038  | 510               | 2675  | 1205  |
| 11           | P11   QH11   QR11  |     | 110            | 2150  | 1188  | 200          | 2850  | 1380  | 270         | 2850  | 1285  | 210               | 2150  | 1188  | 485               | 2850  | 1380  |
| 12           | P12   QH12   QR12  |     | 100            | 2300  | 1338  | 170          | 3025  | 1555  | 230         | 3025  | 1460  | 197               | 2300  | 1338  | 460               | 3025  | 1555  |
| 13           | P13   QH13   QR13  |     | 90             | 2450  | 1488  | 155          | 3200  | 1730  | 200         | 3200  | 1635  | 185               | 2450  | 1488  | 440               | 3200  | 1730  |
| LA1 bis LA3  | Länge Ausleger eingeschoben bis ausgeschoben                                 | mm  | 1150-2900      |       |       | 1650-3750    |       |       | 1650-3750   |       |       | 1150-2900         |       |       | 1650-3750         |       |       |
| LF           | Länge Fahrgestell (Radstand)   | mm  | 1600           |       |       | 1910         |       |       | 1990        |       |       | 1600              |       |       | 1910              |       |       |
| B/Bi         | Breite Fahrgestell Außen/Innen   | mm  | 980/830        |       |       | 1250/1050    |       |       | 1600/1400   |       |       | 980/830           |       |       | 1250/1050         |       |       |
| DF/DF1       | Durchfahrhöhe, Ausleger abgesenkt/waagerecht                                 | mm  | 1600/1700      |       |       | 1980/2200    |       |       | 2000/2250   |       |       | 1600/1700         |       |       | 1980/2200         |       |       |
| Se min./max. | Hubhöhe min. bei LA1/max. bei LA1  | mm  | 890/2350       |       |       | 1160/3450    |       |       | 1185/3475   |       |       | 890/2350          |       |       | 1160/3450         |       |       |
| Sa min./max. | Hubhöhe min. bei LA3/max. bei LA3  | mm  | 0/3750         |       |       | 90/5390      |       |       | 115/5410    |       |       | 0/3750            |       |       | 90/5390           |       |       |
|              | Gangbreite bei 90° Wendung mind. ca.   | mm  | 2200           |       |       | 2600         |       |       | 2700        |       |       | 2200              |       |       | 2600              |       |       |
|              | Hakenlänge ca.   | mm  | 265            |       |       | 330          |       |       | 380         |       |       | 265               |       |       | 330               |       |       |
| R1           | Rad, Lastseite Polyamid  | mm  | 2x125          |       |       | 2x200        |       |       | 2x250       |       |       | 2x125             |       |       | 2x200             |       |       |
| R2           | Rad, Lenkseite Polyurethan   | mm  | 1x200x80       |       |       | 1x200x80     |       |       | 1x200x80    |       |       | 1x200x80          |       |       | 1x200x80          |       |       |
| U            | Unterfahrhöhe  | mm  | 180            |       |       | 240          |       |       | 280         |       |       | 180               |       |       | 240               |       |       |
| O            | Bodenfreiheit  | mm  | 30             |       |       | 30           |       |       | 30          |       |       | 30                |       |       | 30                |       |       |
|              | Eigengewicht   | kg  | 290            |       |       | 520          |       |       | 800         |       |       | 480               |       |       | 950               |       |       |
|              | Hub pro Pumpbewegung bei LA1-LA3 mit/ohne Last                               | ca. | 40-85/70-155mm |       |       | 5-15/10-40mm |       |       | 4-12/8-25mm |       |       | 15mm/sec/19mm/sec |       |       | 20mm/sec/26mm/sec |       |       |

Technische Änderungen ohne vorherige Benachrichtigung vorbehalten.